






# 9 Elbow Lane


Stevenage, SG2 8LP

Price £325,000

 3 Bedrooms

 1 Bathrooms

 1 Reception Rooms

 EPC Rating Band E

A three bedroom end of terraced home, in need of modernisation throughout, offered CHAIN FREE located within a sought after location of Oaks Cross, in close proximity to a number of local schools and a range of amenities.

Inside you will find an entrance hallway which leads into a utility room, kitchen, extended living room and has stairs which rise to a spacious landing, giving access to three well proportioned bedrooms and the family bathroom.

Outside you have a spacious rear garden with a front garden and driveway to the front.

(EPC - E - Stevenage Borough Council - Council Tax Band - C)



- Three bedroom end of terrace house
  - Located in a sought after location close to local amenities
  - In need of full renovation throughout
  - Hallway and utility room
  - Extended lounge
  - Kitchen
  - Three good sized bedrooms and bathroom
  - Private rear garden
  - Driveway to the front
  - CHAIN FREE
- 





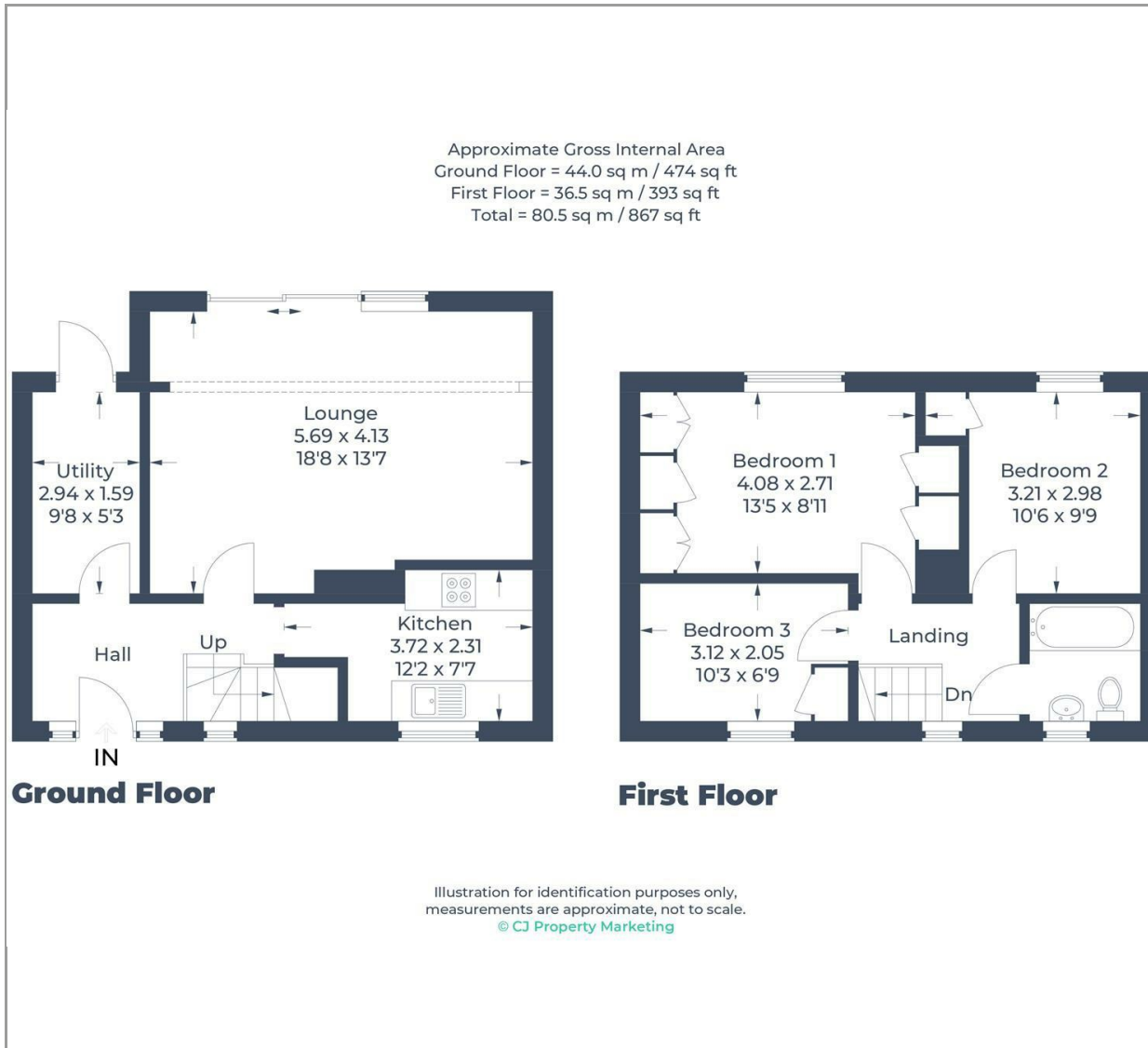






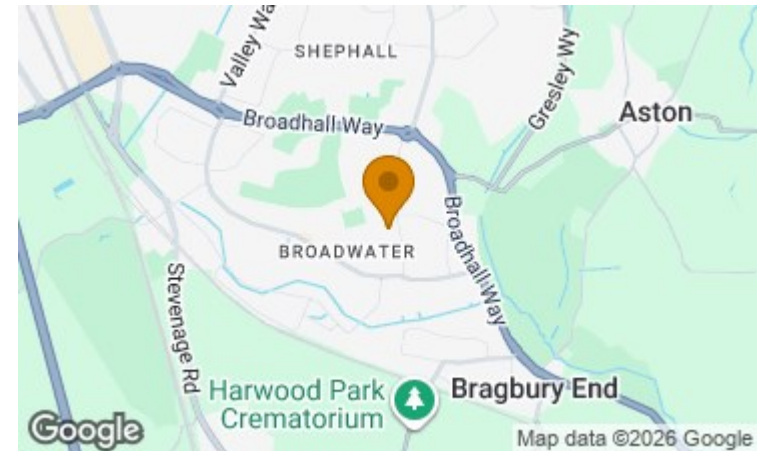
## Additional/Material Information

- Local Authority is Stevenage
- Council tax Band C
- Tenure – Freehold
- Mains Gas, Water, Electricity



### Disclaimer

While we believe the details provided to be correct, we do not guarantee their accuracy. Prospective buyers should verify all information independently before making any decisions. No responsibility is taken for any errors, omissions, or misstatements.



Energy Efficiency Rating		Current	Potential
Very energy efficient - lower running costs			
(92 plus) A			
(81-91) B			
(69-80) C			78
(55-68) D			
(39-54) E		41	
(21-38) F			
(1-20) G			
Not energy efficient - higher running costs			
England & Wales		EU Directive 2002/91/EC	

# CHANDLERS

INDEPENDENT PROPERTY SPECIALISTS

01438 356635

sales@chandlers-estates.co.uk

